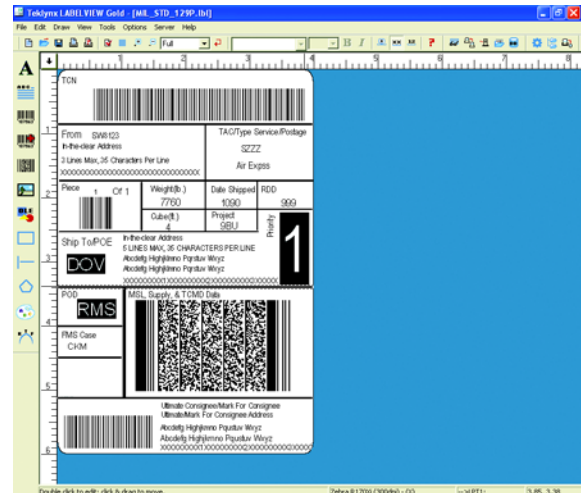


LABELVIEW™

Powerful Label Design and Integration Software for Beginners All the Way Up to Advanced Users

QUICK SPECS

- For Windows 2000, XP, Server 2003, Vista, or Server 2008
- Simple, yet powerful label design interface
- Advanced integration features tie into your existing business systems
- Printer support for 1,750+ thermal and thermal transfer printers, plus any Windows printer
- Advanced RFID tag support
- Graphic support for over 45 formats, including BMP, EPS, GIF, IMG, JPEG, MAC, PCX, TIFF, WPG, and more
- Available in network and print-only versions; no security key required



BAR CODE SYMBOLOGIES

Linear: Codabar, Code 39, Code 39 Full ASCII, Code 93, Extended Code 93, Code 128, EAN-8 and -13, EAN-128, EAN/UCC-8, -13 and -14, GS1-128, HIBC, Intelligent Mail, Interleaved 2 of 5, ISBN-13, ISBT-128, ITF-14, Plessey, POSTNET, UCC-12, UCC/EAN-128, UCC/EAN-128 Coupon Extended Codes, UPC-A, UPC-E

2D/Multi-Dimensional: Aztec, Aztec Mesa, Code 16, Code 49, Data Matrix, MaxiCode, MicroPDF 417, PDF 417, QR Code, RSS-14 Composites, UCC/EAN Composites

DATABASE SUPPORT (OLE DB/ODBC/ASCII)

Access all popular database types including ASCII (comma, tab and quote delimited), DB2, dBase, FoxPro, Informix, Lotus Smart Suite, Microsoft Office, Oracle, Paradox, SQL and others

LANGUAGE SUPPORT

Chinese (2), Dutch, English, French, German, Italian, Japanese (2), Korean, Portuguese (2), Russian, Spanish, Swedish, Turkish

PRINTER SUPPORT

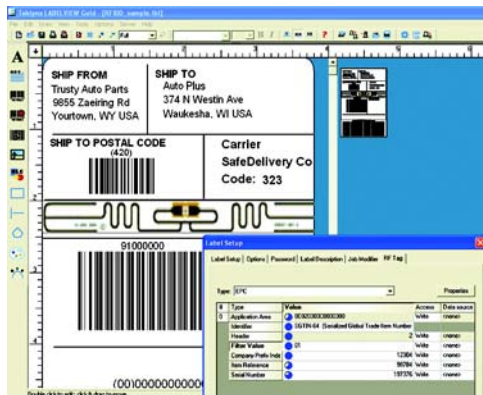
LABELVIEW supports over 1,750 specialized thermal and thermal transfer label printers and any printer with a valid Windows driver supplied by the manufacturer. Printer drivers included with LABELVIEW are installed to the program's "Drivers" directory when the program is installed. Some printers include both a native driver and an extended driver for the same printer model, designated in the program as follows:

- (V) = Driver is a native software driver (developed specifically for use with this label design software)
- (X) = Driver is from an extended driver set (giving you access to the driver's advanced properties)

ADVANCED DESIGN, INTEGRATION AND AUTOMATION FEATURES

FEATURE	DESCRIPTION
TextArt & RichTextField Objects	Design text in a variety of shapes and styles with custom formatting, backgrounds and borders
OLE Client	Create objects from other applications such as Paint, Word, Excel, Acrobat, etc.
Label Inventory Tracking	Track label stock inventory and usage on a local PC or throughout a network
CommWatch	Allows data to be printed from a serial device such as a scale or scanner
DataWatch	Monitor a database and print labels automatically when a new record is added
Label Select	Automate printing based on key field data entered by an operator
Job Modifier	Directly modify printer code prior to printing labels
Command Files	Use simple instruction files or database files to print labels automatically
OLE Automation	Allows for third-party integration for labeling automation

RADIO FREQUENCY IDENTIFICATION (RFID) SUPPORT



LABELVIEW's RFID features allow you to program and print both HF and UHF radio frequency identification labels, including tags to meet EPC, major retailer, and DoD compliance standards.

LABELVIEW also gives you the ability to use a graphical tag image that appears as a watermark on labels to protect against printing over and damaging the RFID tags.

The program supports the most popular RFID printers, and with TEKLYNX' free Driver Service Pack (DSP) utility, you can add support for new RFID printers and tags as soon as they become available to the marketplace.

Visit www.teklynx.com/printers for the latest list of supported RFID printers and tags.

FEATURE	DESCRIPTION
Intuitive RFID Design Interface	Features an easy-to-use interface for RFID tag setup and programming
Enhanced RFID Tag Support	Supports the most popular RFID printers and tags, including UHF RFID labels that are EPC Global Class 1 Gen 2 standard compliant and HF RFID labels that are ISO 15693 standard compliant
Access to RFID Unique Tag ID	The unique tag ID is available as a data source and can be associated with the printed data (dependent on printer support of this feature)
Ability to Add an RFID Tag Image	Ability to use a graphical tag image that appears as a watermark on labels to protect against printing over and damaging the RFID tags
Structured RFID Tag Format	Allows a block to be subdivided into structured sub-blocks for complex tags like EPC