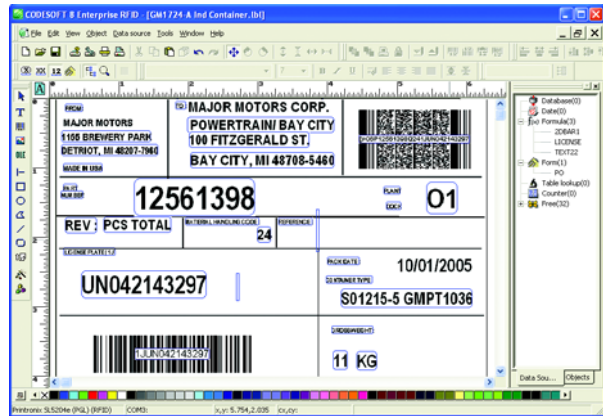


# CODESOFT®

*Advanced Label Design and Integration Software Offering Unmatched Flexibility, Power, and Worldwide Support*

## QUICK SPECS

- For Windows 2000, XP, Server 2003, Vista, or Server 2008
- Drag-and-drop label design
- Data connectivity, security, and interoperability for Enterprise-wide label printing
- Printer support for 1,750+ thermal and thermal transfer printers, plus any Windows printer
- Advanced RFID tag support
- Graphic support for over 45 formats, including BMP, EPS, GIF, IMG, JPEG, MAC, PCX, TIFF, WPG, and more
- Available in network and print-only versions; no security key required



## BAR CODE SYMBOLOGIES

**Linear:** Codabar, Codablock, Code 39, Code 93, Code 128, EAN-8 and -13, Interleaved 2 of 5, ITF 14, Plessey, POSTNET, UCC/EAN 128, UPC-A, UPC-E and others

**2D/Multi-Dimensional:** Aztec, Code 16K, Composite Symbol, Data Matrix, MaxiCode, MicroPDF 417, PDF 417, QR Code, RSS, TLC39 and others

## DATABASE SUPPORT (OLE DB/ODBC/ASCII)

Access all popular database types including ASCII (comma, tab and quote delimited), DB2, dBase, FoxPro, Informix, Lotus Smart Suite, Microsoft Office, Oracle, Paradox, SQL and others

## LANGUAGE SUPPORT

Arabic, Chinese (2), Czech, Danish, Dutch, English, Finnish, French, German, Hebrew, Hungarian, Italian, Japanese, Korean, Norwegian, Polish, Portuguese, Russian, Spanish, Swedish, Turkish

## PRINTER SUPPORT

CODESOFT supports over 1750 specialized thermal and thermal transfer label printers as well as any Windows-based printer. CODESOFT allows you to take advantage of your printer's capabilities to print large runs of labels in a very short time. With its intuitive interface, operators can easily specify printer options including print speed, cut settings and more.

Native CODESOFT printer drivers provide you with full control and optimum performance to take advantage of your printer's capabilities regardless of whether you're using a local (COM, LPT, USB) or network (IP, UNC) connection. And with 'TEKLYNX' free web-based Driver Service Pack (DSP) utility, you can upgrade new printers as soon as they become available to the marketplace.

## ADVANCED DESIGN, INTEGRATION AND AUTOMATION FEATURES

FEATURE	DESCRIPTION
UNICODE	Allows you to connect the label to any UNICODE data (text files, databases, etc.)
Multiple Database Connections	Easily switch from one database connection to another using a drop-down menu on the toolbar
Form Designer/Viewer	Create/view custom front-end user interface screens for data entry and label printing
Font Downloader	Download non-resident Windows fonts directly to thermal printers
Job Modifier	Directly modify printer code prior to printing labels
ActiveX Automation version 2	Allows developers to create and print labels dynamically from their own applications

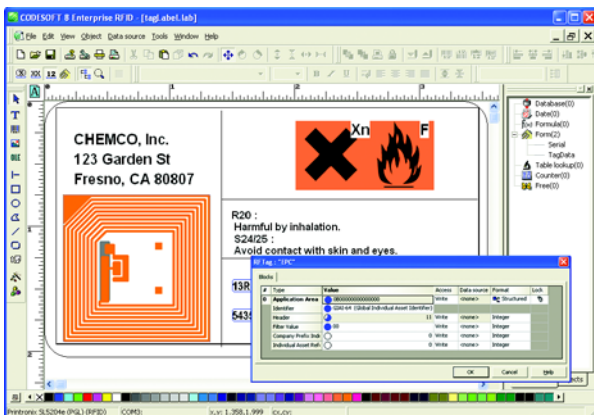
## POWERFUL ADD-ONS

**Command File Interpreter** (Pro & Enterprise) - Print labels automatically.

**POF Manager** (Enterprise) - Create and modify printer object files through a user-friendly interface.

**Form Designer** (Enterprise) - Quickly build front-end data entry and label printing applications.

## RADIO FREQUENCY IDENTIFICATION (RFID) SUPPORT



CODESOFT features advanced RFID printing abilities that provide complete coverage for all RFID compliance applications today and in the future.

It supports bi-directional communication that enables read/write RFID printers to read the data back from the label at print time to log and print the exact information programmed on each label.

CODESOFT supports the most popular RFID tags – visit [www.teklynx.com/printers](http://www.teklynx.com/printers) for the latest list of supported RFID printers and tags.

FEATURE	DESCRIPTION
Intuitive RFID Design Interface	Features an easy-to-use interface for RFID tag setup and programming
Enhanced RFID Tag Support	Supports the most popular RFID printers and tags, including UHF RFID labels that are EPC Global Class 1 Gen 2 standard compliant and HF RFID labels that are ISO 15693 standard compliant
Access to RFID Unique Tag ID	The unique tag ID is available as a data source and can be associated with the printed data (dependent on printer support of this feature)
Bi-Directional Communication	Enables read/write RFID printers to read the data back from the label at print time to log and/or print the exact information programmed on each label
Ability to Add an RFID Tag Image	Ability to use a graphical tag image that appears as a watermark on labels to protect against printing over and damaging the RFID tags
Structured RFID Tag Format	Allows a block to be subdivided into structured sub-blocks for complex tags like EPC