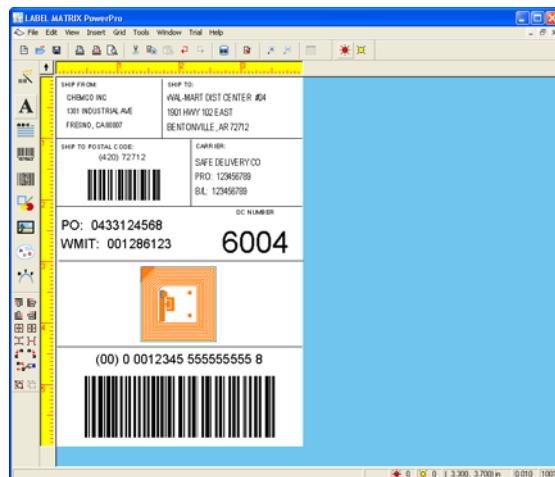


# LABEL MATRIX®

*Easy-To-Use Label Design Software with an Intuitive User Interface and Helpful Label Design Wizards*

## QUICK SPECS

- For Windows 2000, XP, Server 2003, Vista, or Server 2008
- Familiar Windows drag-and-drop interface
- Helpful “wizards” walk you through label setup, image design, database access, and printer setup
- UCC certified for EAN.UCC System users
- Printer support for 1,750+ thermal and thermal transfer printers, plus any Windows printer
- Advanced RFID tag support
- Graphic support for many popular formats, including BMP, GIF, IMG, JPEG, PCX, TIFF, and more
- Available in multi-user network and print-only (LM PrintPack) versions; no security key required



## BAR CODE SYMBOLOGIES

**Linear:** Codabar, Code 39, Extended 39, Code 93, Extended 93, Code 128, EAN/JAN-8 and -13, EAN/UCC-8, -13 and -14, GS1-128, HIBC, Intelligent Mail, Interleaved 2 of 5, ISBN-13, ISBT-128, ITF-14, MSI Plessey, PLANET Code, POSTNET, UCC-12, UCC-128, UCC-128 Coupon Code, UPC-A, UPC-E

**2D/Multi-Dimensional:** Aztec, Aztec Mesa, Code 16K, Code 49, Data Matrix, EAN/UCC Composites, MaxiCode, MicroPDF 417, PDF 417, QR Code, RSS-14 Composites, TLC39

## DATABASE SUPPORT (OLE DB/ODBC/ASCII)

Access all popular database types including ASCII (comma, tab, and quote delimited), DB2, dBase, FoxPro, Informix, Lotus Smart Suite, Microsoft Office, Oracle, Paradox, SQL, and others

## LANGUAGE SUPPORT

Dutch, English, French, German, Italian, Polish, Portuguese, Spanish

## PRINTER SUPPORT

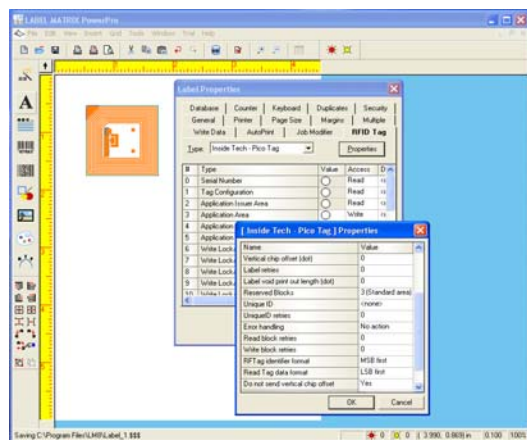
LABEL MATRIX supports over 1,750 specialized thermal and thermal transfer label printers and any printer with a valid Windows driver supplied by the manufacturer. Printer drivers included with LABEL MATRIX are installed to the program’s “Drivers” directory when the program is installed. Some printers include both a native driver and an extended driver for the same printer model, designated in the program as follows:

- (L) = Driver is a native software driver (developed specifically for use with this label design software)
- (X) = Driver is from an extended driver set (giving you access to the driver’s advanced properties)

## ADVANCED DESIGN, INTEGRATION AND AUTOMATION FEATURES

FEATURE	DESCRIPTION
Tabbed Label Browsing	Easily browse through multiple open labels by simply clicking the tab for the desired label
Label Backgrounds	For single-label layouts, make your label design process easier by using a “base layer” outline
Live Print Preview	Allows you to preview “live” variable data including any Keyboard or Database origin images
Bundle Save	A label design and its associated files can be saved as a bundle, making it easy to port labels to another PC
TextArt & RichTextField Objects	Design text in a variety of shapes and styles with custom formatting, backgrounds and borders
Expansion Variables	Reduce the size of large expressions by using an expansion variable “shortcut” in place of repeating code
Unlimited Database Support	Attach multiple relational databases with an unlimited number of “key” search fields
AutoPrint	Automatic printing from a source database
Write Data	Export image and variable information to a data file
Job Modifier	Directly modify printer code prior to printing labels
OLE Automation & LMWPrint	Integrate labeling with third-party applications using OLE Automation or LMWPrint command line calls

## RADIO FREQUENCY IDENTIFICATION (RFID) SUPPORT



LABEL MATRIX is RFID made simple – the easy solution for closed-loop RFID label printing to meet EPC and DoD compliance standards.

It features an easy-to-use interface for users printing and programming RFID labels, while still offering the advanced functionality needed for today’s RFID label printing applications.

LABEL MATRIX supports the most popular RFID tags – visit [www.teklynx.com/printers](http://www.teklynx.com/printers) for the latest list of supported RFID printers and tags.

FEATURE	DESCRIPTION
Intuitive RFID Design Interface	Features an easy-to-use interface for RFID tag setup and programming
Enhanced RFID Tag Support	Supports the most popular RFID printers and tags, including UHF RFID labels that are EPC Global Class 1 Gen 2 standard compliant and HF RFID labels that are ISO 15693 standard compliant
Access to RFID Unique Tag ID	The unique tag ID is available as a data source and for associating the printed data to the unique tag (dependent on printer support of this feature)
Ability to Add an RFID Tag Image	Ability to use a graphical tag image that appears as a watermark on labels to protect against printing over and damaging the RFID tags
Structured RFID Tag Format	Allows a block to be subdivided into structured sub-blocks for complex tags like EPC