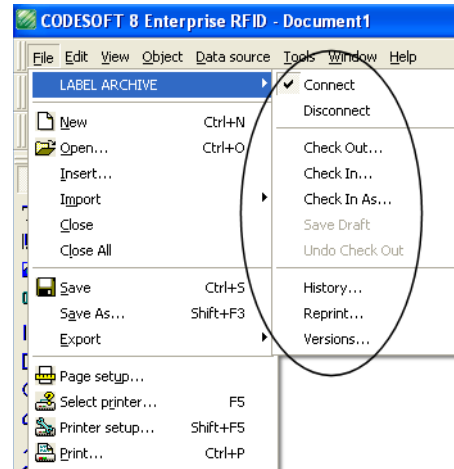


LABEL ARCHIVE

Security & Traceability Layer for Your Label Printing Process Using CODESOFT or LABELVIEW

QUICK SPECS

- For Windows 2000, XP, Server 2003, Vista, or Server 2008
- Designed to work with CODESOFT and LABELVIEW label design and printing software
- Includes Server, Client, and Web modules for a complete and secure label printing system
- Traceability layer for label design and printing through Check In, Check Out, Print History, Document Approval, and other document control functions
- Secures the label design and printing process – only approved labels enter production
- Addresses change control requirements demanded by Healthcare, Pharmaceutical, and other industries



LABEL ARCHIVE SERVER

The Server Module typically runs on a server machine as a centralized database, driven through a Windows service. It allows administrator-level users to configure user management and messaging systems, as well as set up all label approval, archiving, and security preferences.

LABEL ARCHIVE CLIENT

The Client Module is an add-on to the label designer application. It connects to the Server module to give authorized users the ability to perform document management activities (Check In, Check Out, Print History, Version Control, Reprint, etc.) from within the label designer application.

LABEL ARCHIVE WEB MODULE

The Web Module allows remote users to connect to the Server via a Web browser and perform base-level functions including viewing and approving documents and viewing history records.

FEATURE	DESCRIPTION
User Management	Manages users, rights and access for all aspects of the label design and printing process
Messaging	Provides instant communication through e-mail, SMS, etc.
Archiving	Allows complete version control and access to previous versions of a label design
Approval	Ability to require up to three approval levels (Draft, In Approval, and Final)
History	Tracks history entries for all print jobs (including all variable data printed), printing errors, label modifications, etc.
Reprint Ability	Reprints labels on demand to reproduce an exact copy of labels printed in a previous print job
Watermark	Ability to print a watermark on test labels or label reprints to prevent unauthorized labels from entering production
Remote Approval	Remote users can be included in the approval process using a Web browser on the Internet or an intranet